



LIFAair®

LAH302 Smart Air Purifying Humidifier

Please read this user manual carefully before using, and keep for future reference.

Preface

Děkujeme, že jste si zvolili právě tuto věc.

Important Safety Information

- Please read this user manual carefully and keep for future reference.
- Only use attachments/accessories provided by the manufacturer.
- LIFAair shall take no responsibility for any product damage or other consequences result from use of components (including wet curtain) not specified by LIFAair.
- Install the machine properly in accordance with instructions in the manual.
- To reduce the risk of fire and electric shock, do not block any ventilation openings or insert any object into the ventilation openings or slots.
- Keep the machine away from children to avoid accidents.
- Keep the provided accessories and parts (such as screws) away from children to prevent from being swallowed by mistake.

⚠️ WARNING!

- Please do not attempt to disassemble and repair the machine without the presence of professionals to avoid fire, electric shock, and being injured.
- Protect the power cord from being trod on or pinched, otherwise the cable core may be exposed or broken.
- Do not put any object into the protective parts, the movable portion, the water barrel, the water inlet, the air inlet or air outlet.
- Do not pour impurities or corrosive liquids into the grilles on the top side to avoid machine damage.
- Do not insert any object (such as hands or sticks) into the ventilation openings or the machine body to avoid product damage or injury.
- During using, make sure there is an airflow around the machine, and do not put any textiles, papers or similar objects into the air inlet and/or air outlet.
- Please **switch off and unplug the machine** before replacing the wet curtain and/or HEPA filter or cleaning the barrel.

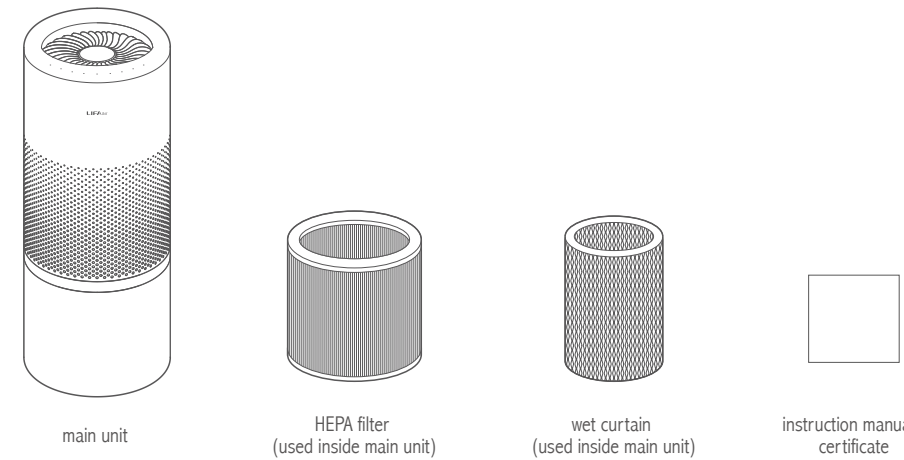
Tips:

- To prevent electric shock, be sure to follow this manual carefully for cleaning and maintaining. Please do not try to maintain the product in any other manner.
- Do not immediately turn the power off after the humidifying process ceased. In case of water residual on the wet curtain, press and hold the "u" button for automatic air-drying to prevent bacteria from growing in a humid environment.
- If not used for long periods of time, please pour water thoroughly out of the water barrel and keep dry.

Use only with the cart, stand, tripod, bracket, or table specified by the manufacturer, or sold with the apparatus. When a cart is used, use caution when moving the cart/apparatus combination to avoid injury from tip-over.

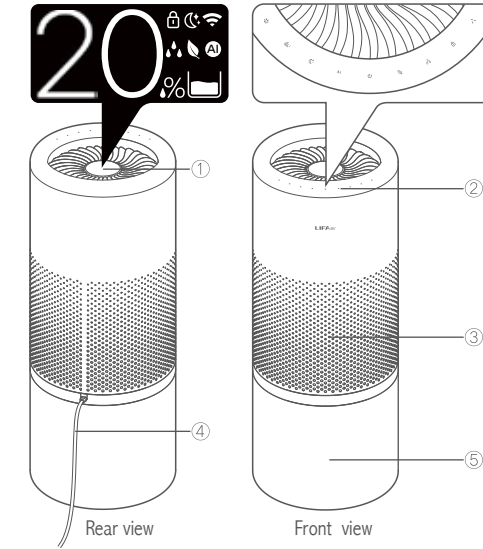
Correct disposal of this product. This marking indicates that this product should not be disposed with other household wastes throughout the EU. To prevent possible harm to the environment or human health from uncontrolled waste disposal, recycle it responsibly to promote the sustainable reuse of material resources. To return your used device, please use the return and collection systems or contact the retailer where the product was purchased. They can take this product for environmental safe recycling.

Packing List



Function Description

- ① Photosensitive sensor/water pouring reaction/display screen
- ② Touch control circle/buttons
 - * Fan speed up: press to increase by level press and hold to increase continuously
 - ⦿ Water route cleaning: press and hold to start water route cleaning
 - ☾ Night mode: press and hold to enable/exit night mode
 - Ⓐ Smart/manual mode: press and hold to switch between smart mode and manual mode
 - Ⓞ Power on/standby/wet curtain air-drying mode: press and hold: power on - wet curtain air-drying mode - standby (if water level is too low, the wet curtain air-drying mode does not function)
 - ☺ Energy-saving mode: press and hold to enable/exit energy-saving mode
 - ☼ Humidifying mode: press and hold to enable/exit humidifying mode (target humidity: 60%); target humidity is 50% when the "⦿" icon is not displayed.
 - ⚡ Child lock switch: press and hold to enable/exit child lock mode
 - ↔ Fan speed down: press to decrease by level press and hold to decrease continuously
- ③ Air inlet
- ④ Power cable
- ⑤ Water barrel
 - Press and hold the "⦿" "⦿" buttons simultaneously: check filter lifespan
 - Press and hold the "☾" "Ⓐ" buttons simultaneously: reset filter lifespan
 - Press and hold the "☺" "☼" buttons simultaneously: check device information
 - Press and hold the "⚡" "↔" buttons simultaneously: enter Wi-Fi network connection

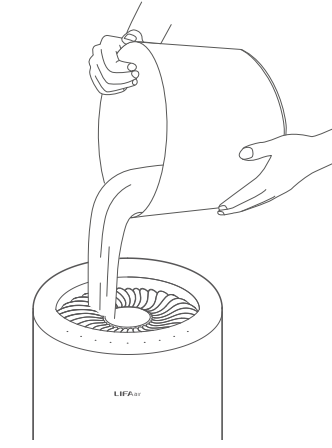


Note: Do not block the intake and exhaust opening.

Use

Add water

The display screen shows the current water level. When it shows "Low Water Level Add Water", the humidifier must be refilled to continue operating. Slowly add water. **First pour water onto the display screen, it will auto-switch to the "Water Level" interface.** When the water level reaches 100% along with a prompt tone, please cease to add water to avoid spilling. If the water level is too low, the humidifier will not operate; if the water level is too high, there will be a prompt tone.



UV disinfection light

When the water level is over 90% for the first time, or the water level is over 90% for more than 24 hours, the UV disinfection light will auto-operate for 20 minutes. In subsequent use, the UV disinfection light will also auto-operate for 20 minutes if the water level is below 60% and then refilled to over 90%. The UV light operation does not interfere with the normal operation of the humidifier. The UV disinfection light function can be cancelled via the APP in the mobile phone.



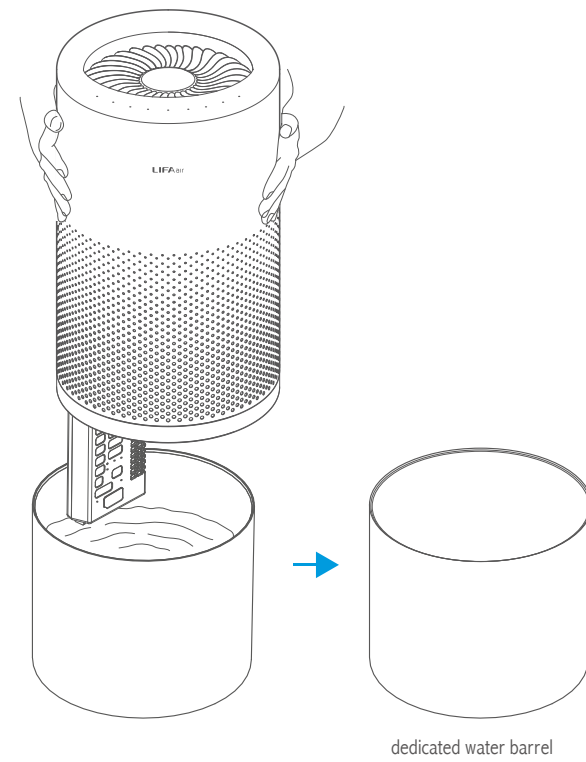
Note: Due to product and software upgrades, operation interfaces shown on this manual may be slightly different from actual product. If any difference is found, the actual product prevails.

V1.0

LIFAair Oy Ltd.
Vellamonkatu 30 B 00550 Helsinki Finland
Manufactured by Dongguan LIFAair Technology Limited
Address: No. 2, East Industry Road, Songshan Lake Science & Technology Industrial Park, Dongguan, 523808, CHINA
www.lifaair.com Designed in Finland

Water barrel cleaning (be sure the main unit is not operating, unplug the power cord and then proceed to clean water barrel)

A weekly barrel cleaning is recommended. Turn the power off, then lift the main unit by hands and place it into a dedicated empty water barrel.



Note: When removing the main unit for barrel cleaning and water route cleaning, please turn the power off to lift the main unit by hands and place it into a dedicated empty water barrel as shown above. Please also move the humidifier in this way. Slightly tilt the main unit, hold the main unit with one hand, and hold the bottom of the empty barrel with the other hand, then proceed to move.

Water route cleaning

Please follow the steps below to perform a water route cleaning every two months:

- confirm that water level of the water barrel is below 30%;
- turn the power off;
- remove the main unit;
- drop the specified amount of citric acid into the water barrel and let it fully dissolve;
- place the main unit back onto the water barrel;
- turn the power on;
- press the "⦿" icon;

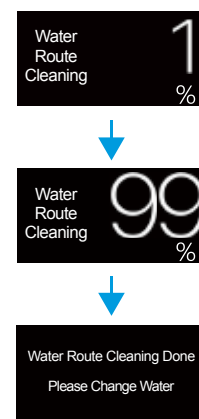
The humidifier will auto-run the pump continuously for 30 minutes. After cleaning is completed, there will be a prompt tone and "Water Route Cleaning Done" will be shown on the display screen. Then:

- turn the power off;
- remove the main unit;
- clean the water barrel;
- place the main unit back onto the water barrel;
- turn the power on;

And then:

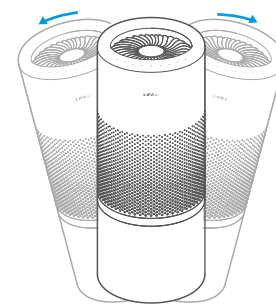
- pour the water from the top to reach around 50%;
- press the "⦿" button again;
- turn the power off when hearing a prompt tone in 30 minutes;
- remove the main unit;
- pour water thoroughly out of the water barrel;
- place the main unit back onto the water barrel;
- turn the power on;
- add water;

The water route cleaning has been completed.



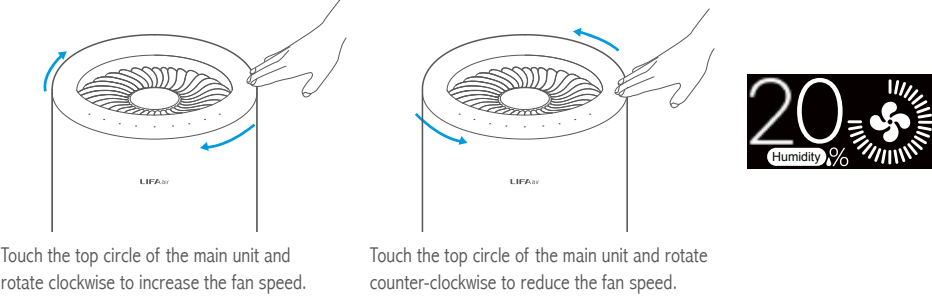
Tilting warning

Note: Use with caution to avoid tilting the humidifier! The main unit will turn off when tilted.



Manually control fan speed

Control the fan speed as convenient as this!



APP connection

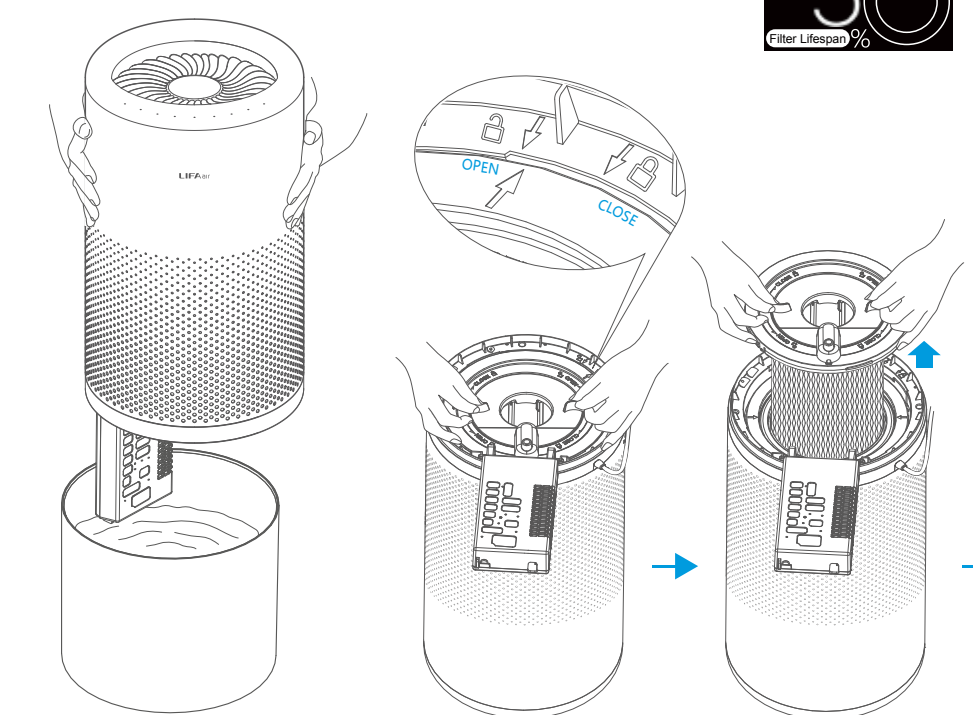
Scan the QR code to download and install the LIFAair APP. After installation is completed, add device in the APP, and follow instructions to operate.



Wet curtain and HEPA filter replacement

(be sure the main unit is not operating, unplug the power cord and then proceed to replace wet curtain and/or filter)

The humidifier has a reminder feature. When the "Filter Lifespan" indicated by the display screen reaches below 5%, the APP will warn you to replace soon. Press and hold the "⦿" "⦿" buttons simultaneously to check HEPA filter lifespan.

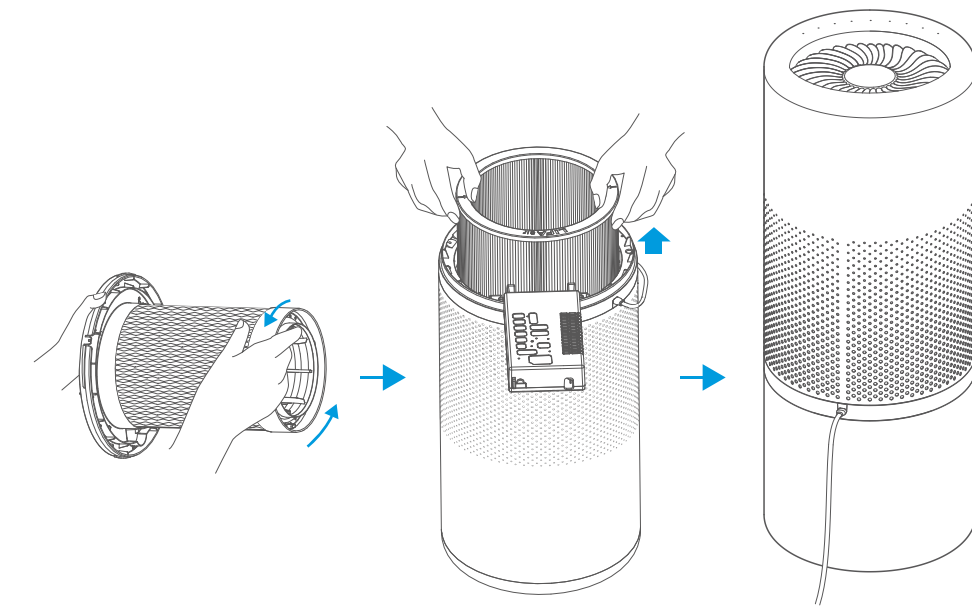


Please carefully separate the main unit and the water barrel, and avoid tilting as there is water in the water barrel.

Cover the ground with a soft towel or a protective pad, flip the main unit upside down and rotate the bottom cover to unlock position. Make sure the power is cut off.

Lift by hands to take out the wet curtain.

After replacement is completed, press and hold the "☾" "Ⓐ" buttons simultaneously to reset the HEPA filter and wet curtain lifespan, so as to re-start the smart monitoring for the HEPA filter and wet curtain lifespan.



Rotate counter-clockwise to take out the wet curtain for replacement.

Take out the HEPA filter for replacement.

After replacing the HEPA filter and wet curtain, please reinstall in reverse order. Flip the main unit carefully back to the upright position. Then turn the power on for use.

Specifications

Product name: Smart Air Purifying Humidifier
Model number: LAH302
Rated humidification capacity: 1000ml/h
Humidification efficiency: 2.2ml/(h*W)
Rated water barrel capacity: 6.5L
Sound power level noise: < 60dB(A)
Rated input: 220V~ 50Hz
Rated power: 450W/50W (Energy-saving mode)
Particle Clean Air Delivery Rate (CADR particulate matter): 180m³/h

Note: Performance data above are in accordance with GB/T23332-2018 and GB/T18801-2015 tested by the third-party laboratories.

Troubleshooting

Humidifier not working?

Please check whether the power cord is correctly connected. Please check whether the humidifier is in minimum fan speed. Please check whether the bottom cover is in the lock position.

Running noise?

Please check whether the HEPA filter is installed.

Fan still running when powered off?

Due to water residual on the wet curtain, the humidifier will automatically perform a wet curtain air-drying to prevent bacteria from growing in a humid environment.

Customer Service – International

If you have any questions, please contact us at care@lifa-air.com or visit us at www.lifaair.com

Please note: All right to change or modify the product without prior notice are reserved.